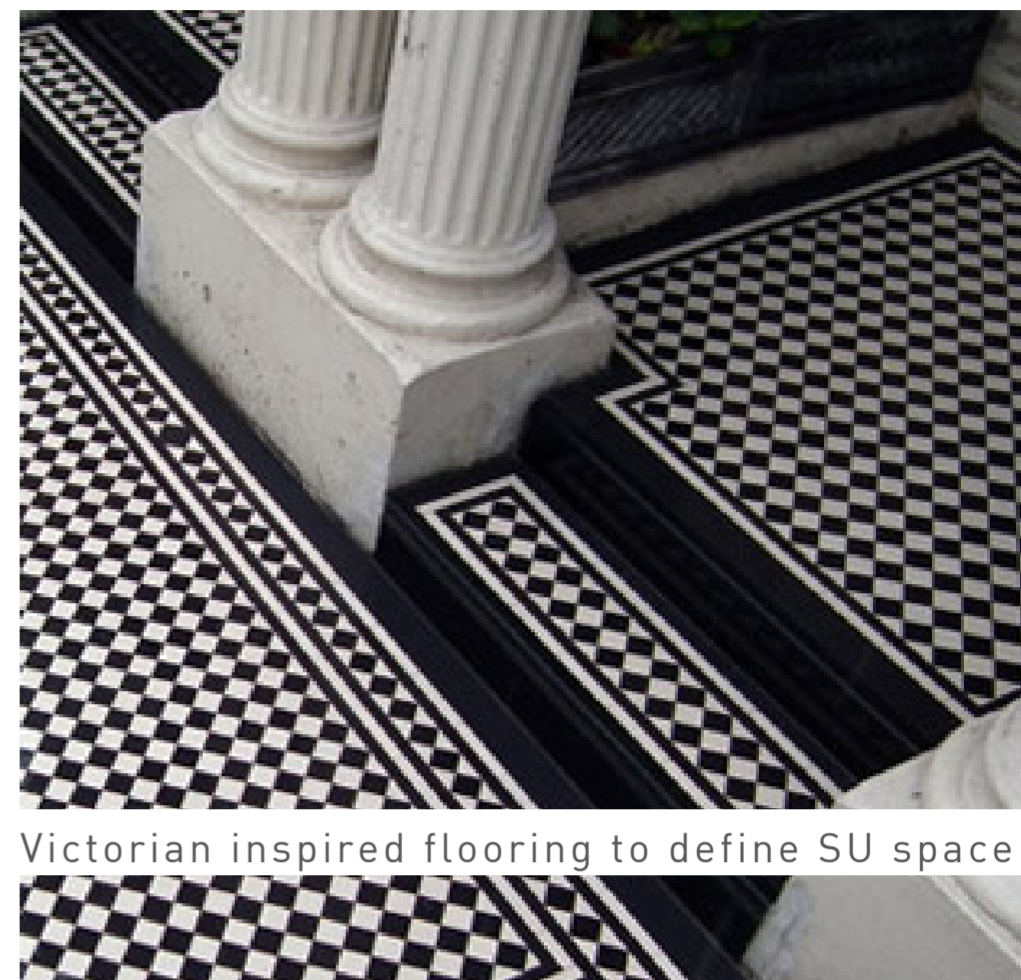
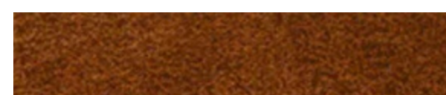


# RELOCATION OF BLSA TO GARROD BUILDING

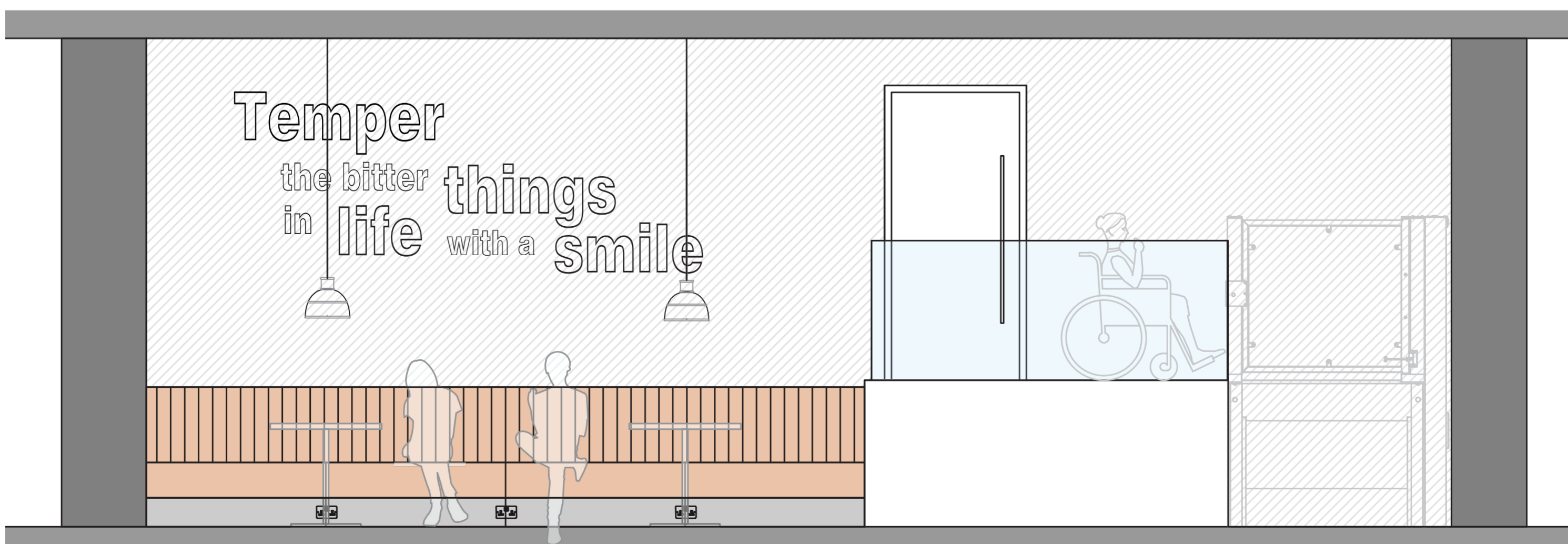
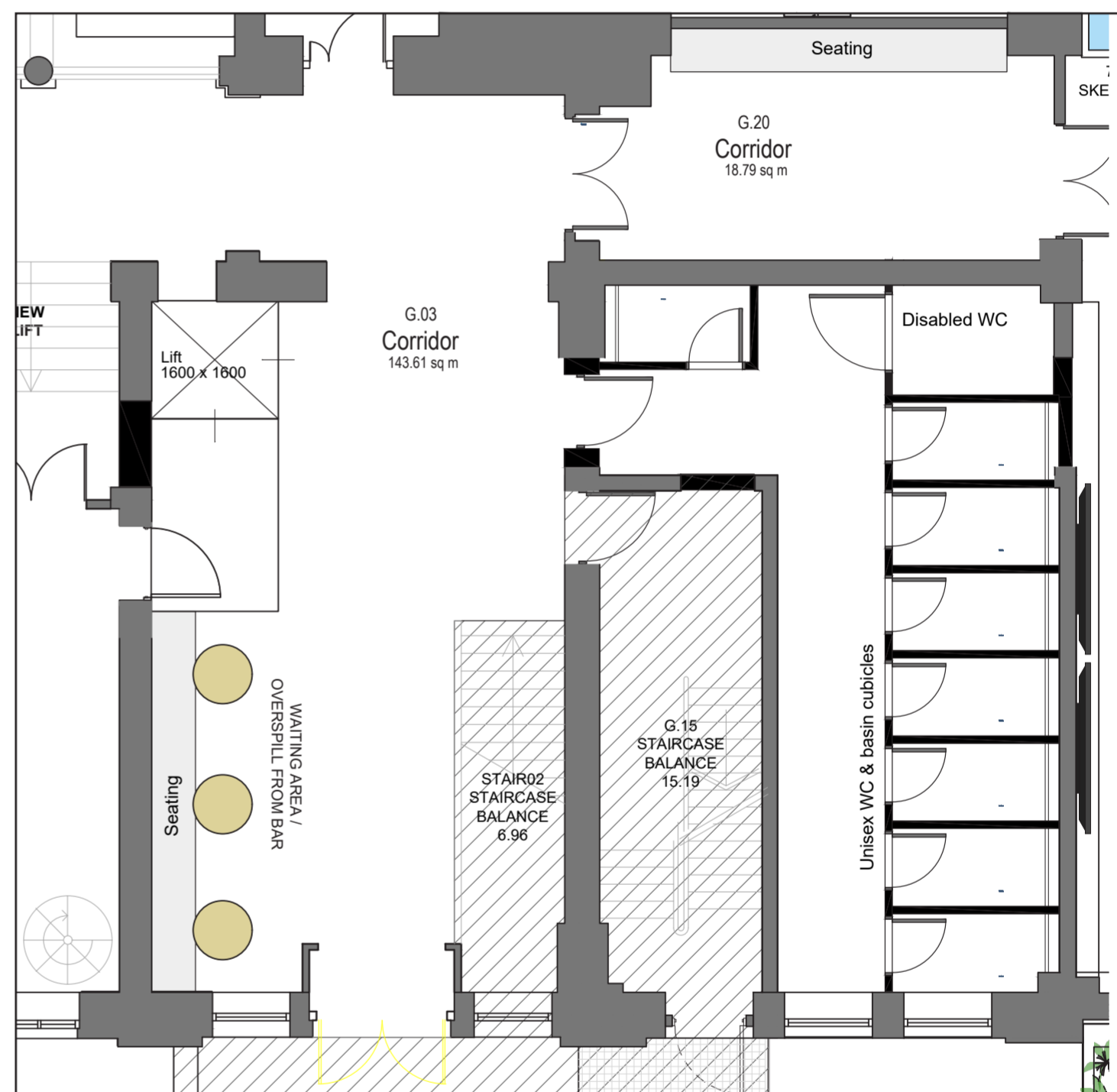
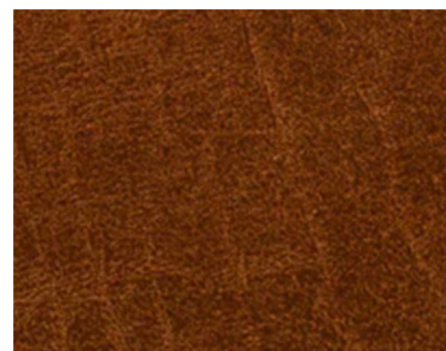
## CIRCULATION AREAS, look and feel



marbles



tan leather



Elevation showing waiting / overspill area from bar

# RELOCATION OF BLSA TO GARROD BUILDING

CIRCULATION AREAS, feature signage and wayfinding



Colours inspired by Victorian colour palette.

### Floor indicators

Vertical circulation (stairwells) to be **terracotta** with illuminated floor indicator.

### Room wayfinding

Metal powder coated door signs:  
**Green** - indicates teaching space  
**Mustard** - indicates SU space



### Circulation flooring Option 01

Ground floor:  
 Natural marmoleum flooring laid in a Victorian inspired pattern

Upper floors:  
 Marmoleum sheet using light grey colour



### Circulation flooring Option 02

Ground floor:  
 Vinyl timber parquet flooring

Upper floors:  
 Vinyl timber sheet flooring

